

Reproductive disorder diseases

In simple language this can be defined as a disease affecting that leads to infertility or sterility

Fertility : ability of an animal to reproduce

Infertility : temporary inability of the animal to reproduce

Sterility : permanent inability of the animal to reproduce

Causes :

1-anatomical or structural defects (hereditary disease)

2-functional defects(hormonal disease)

3-infectious causes

4-Management causes

Hormonal infertility

1 -cystic ovaries (decrease LH)

A- follicular cysts

B- luteal cysts

C - cystic corpus luteum

2 -delayed ovulation (delayed release LH)

3 - inactive ovaries (decrease FSH)

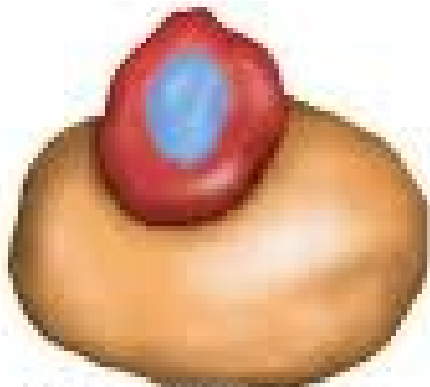
Cystic ovary



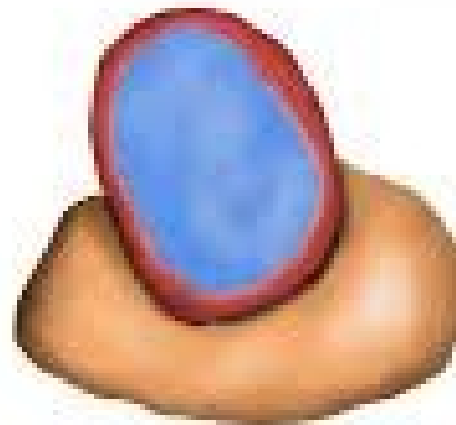
Corpus Luteum



Follicular Cyst



**Cystic Corpus
Luteum**



Luteal Cyst

Follicular cysts



Follicular cysts

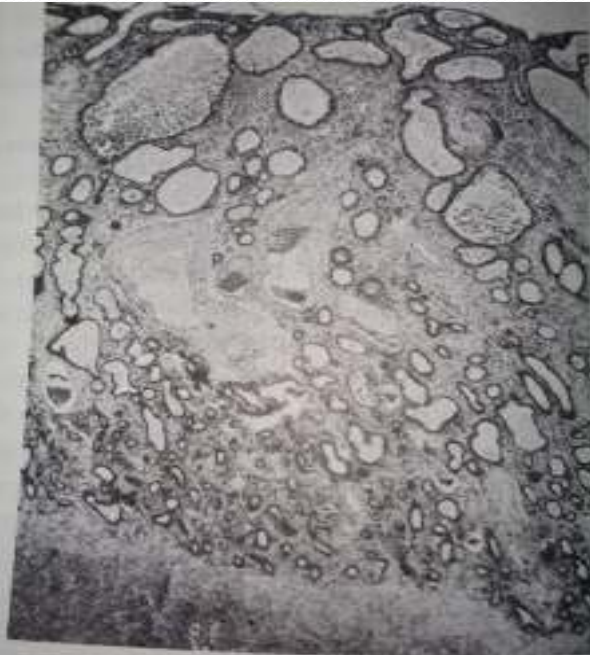
Nymphomania in Follicular cysts

developed to Sterility hump



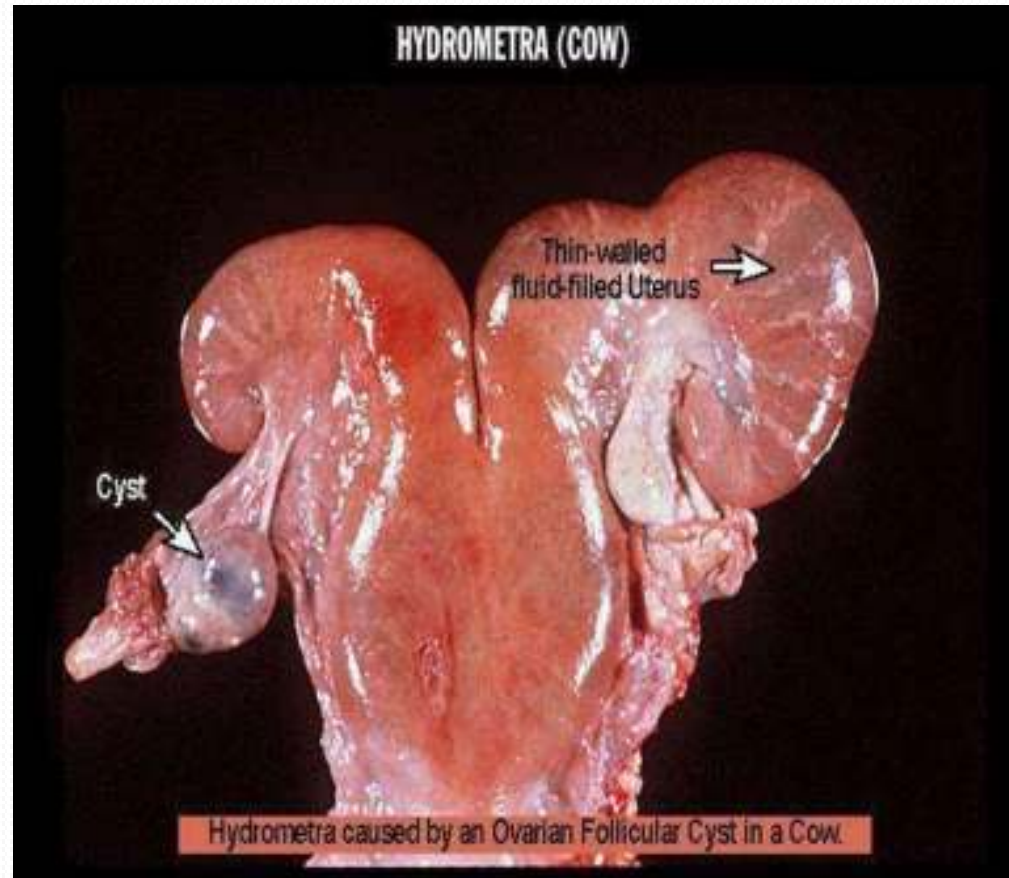
Follicular cysts

cystic uterine gland



113. Cystic Endometrial Glands Caused by Cystic Ovaries
Courtesy K. Milner

hydrometra in follicular cyst



Follicular cysts

OVARIAN CYSTS - CYSTIC RETE OVARIII (QUEEN)

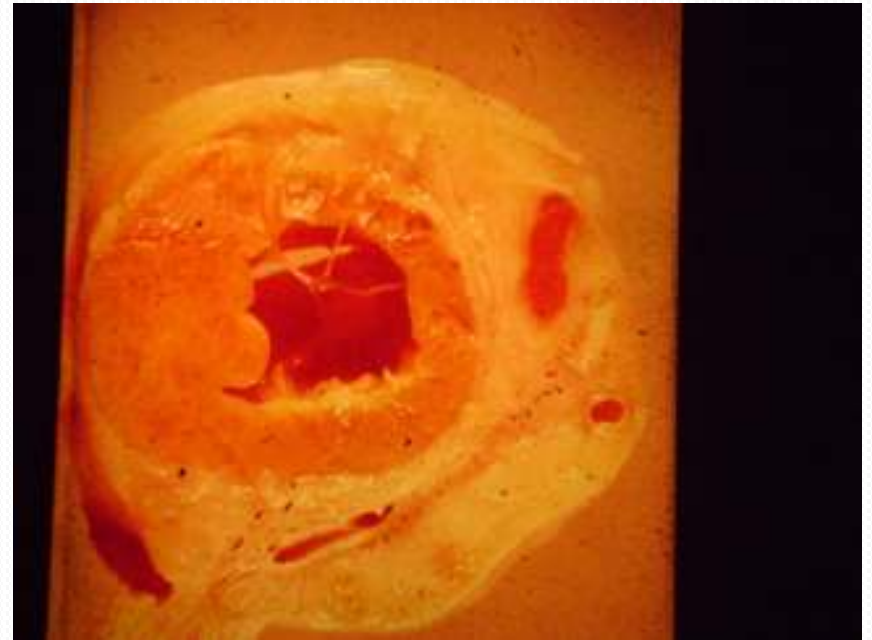


Luteal cyst

Luteal cyst



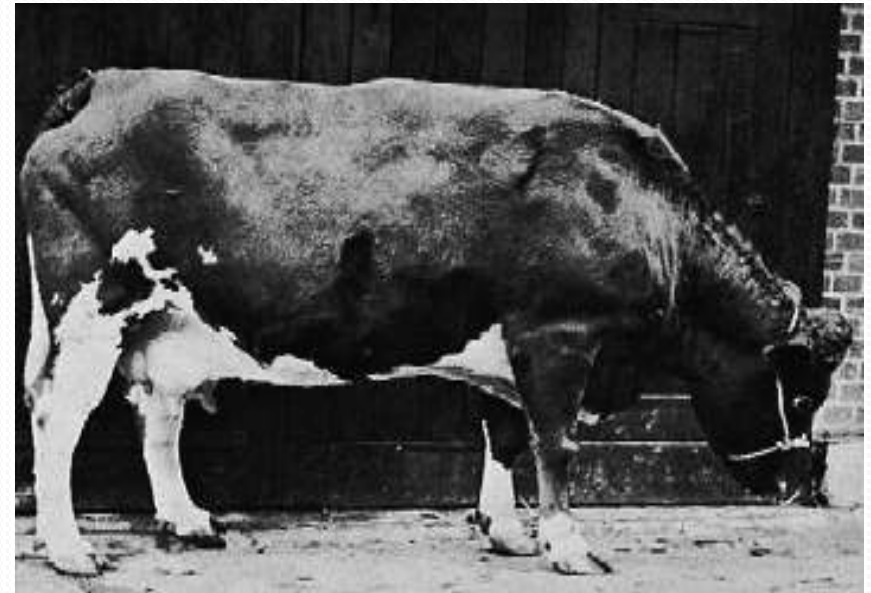
Luteal cyst



Luteal cyst

ovary luteal cyst

Luteal cyst developed to virilism



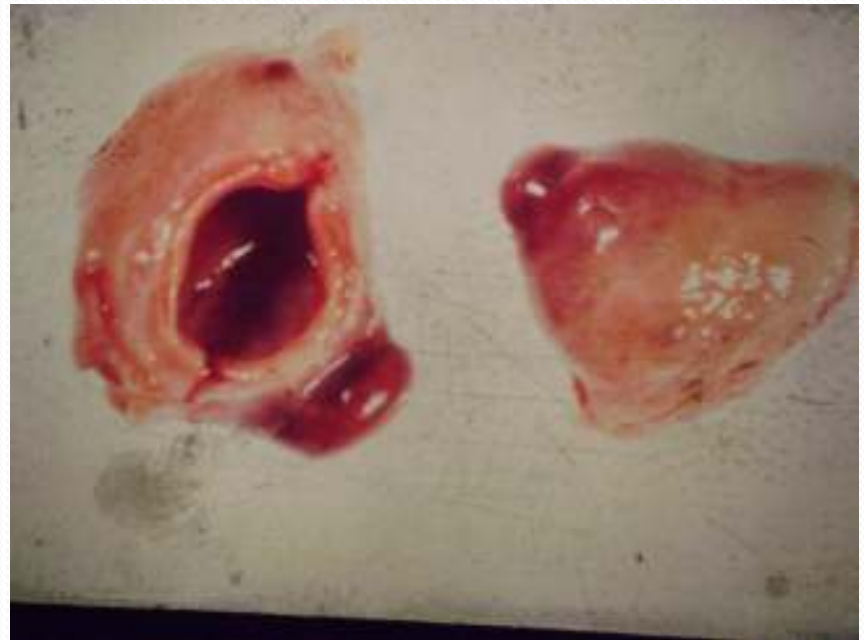
Follicular cyst

- 1- no ovulated mature follicle
- 2-decreas LH +++
- 3-frequently multiple in one or both ovaries
- 4-soft thin walled , fluid filled structure ≥ 2.5 cm diameter which persist
- 5- affected cow will be nymphomania
- 6- progression to sterility hump
- 7-causes increase estrogen hormone

luteal cyst

- 1- no ovulated mature follicle
- 2-deccreas LH +
- 3- usually single
- 4- soft thick walled , fluid filled structure ≥ 2.5 cm diameter which persist
- 5-Affected cow will be anestrous
- 6- progression to virilism
- 7- causes increase progesterone hormone

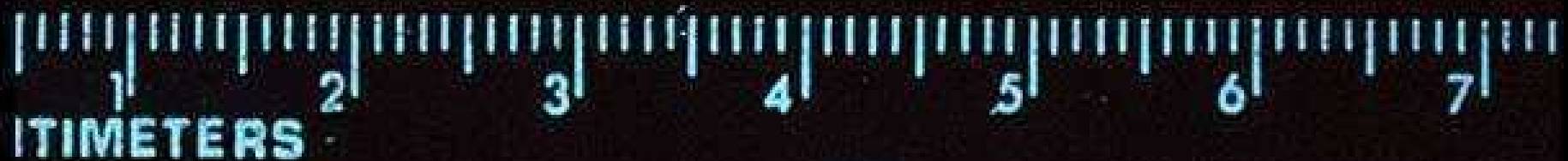
Cystic corpus luteum



OVARIAN CYSTS - CYSTIC CORPUS LUTEUM (COW)



Merely a corpus luteum with a hole in the middle.



Inactive ovaries

